






# Statistics of Tomorrow - Integrating Small data and Big data


Marie Haldorson  
Director, Statistics Sweden



 [facebook.com/statistikacentralbyranscb](https://facebook.com/statistikacentralbyranscb)  [@SCB\\_nyheter](https://twitter.com/SCB_nyheter)  [statistiska\\_centralbyran\\_scb](https://instagram.com/statistiska_centralbyran_scb)  [www.linkedin.com/company/scb](https://www.linkedin.com/company/scb)



## Agenda



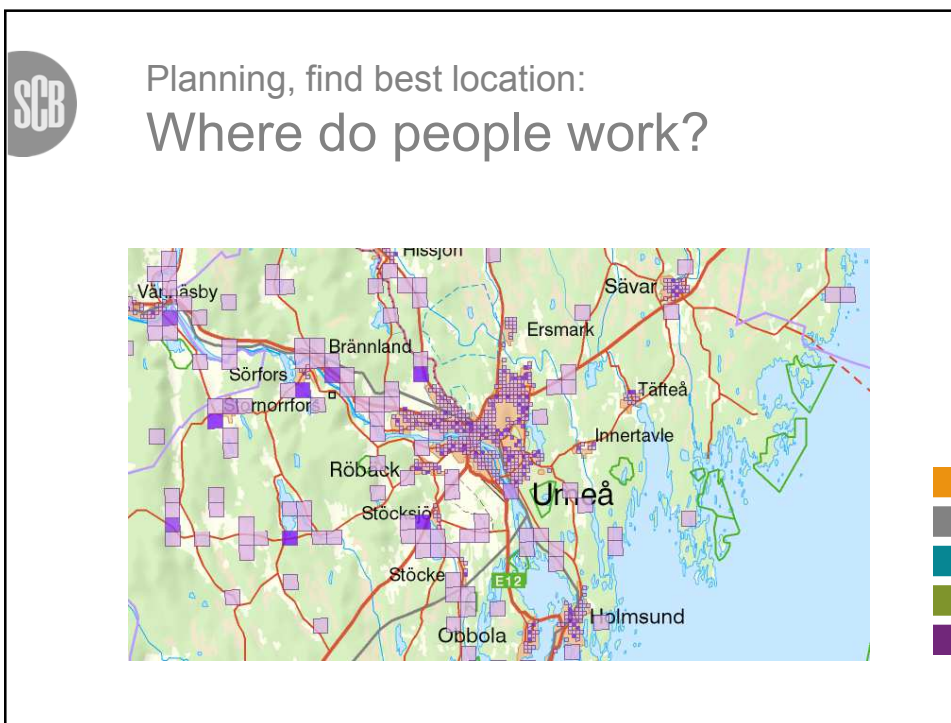
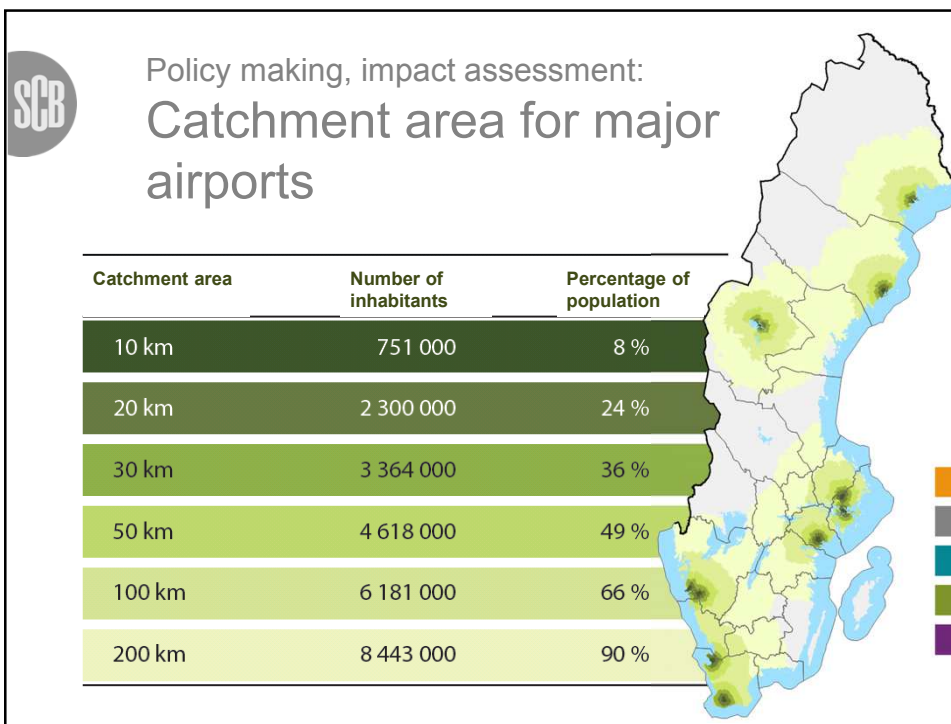
- Measuring our cities
- Small data and Big data
- Statistical production
- Cooperation

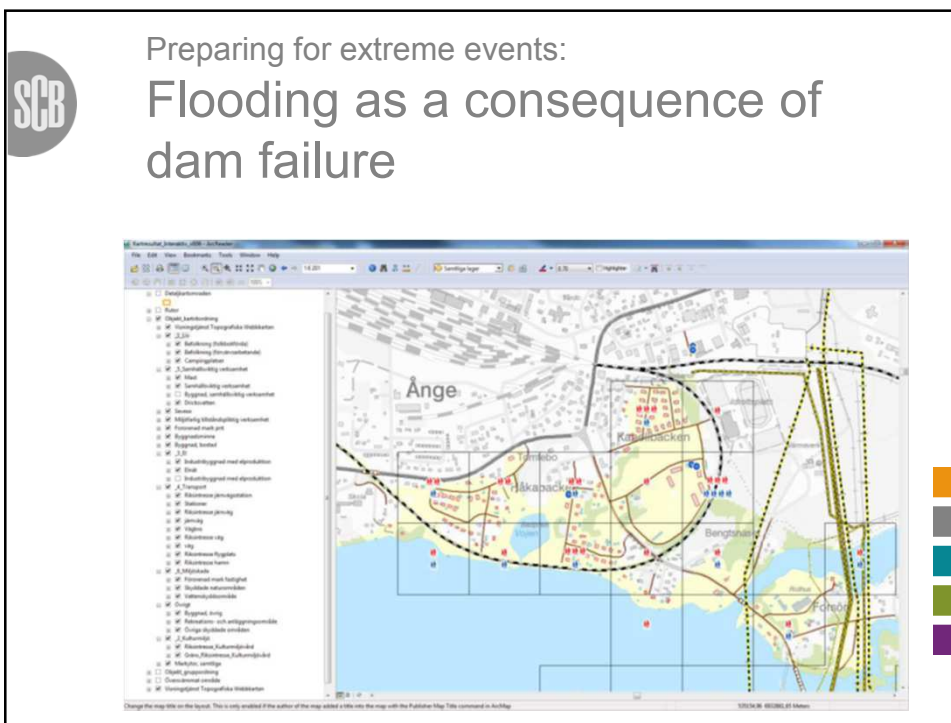
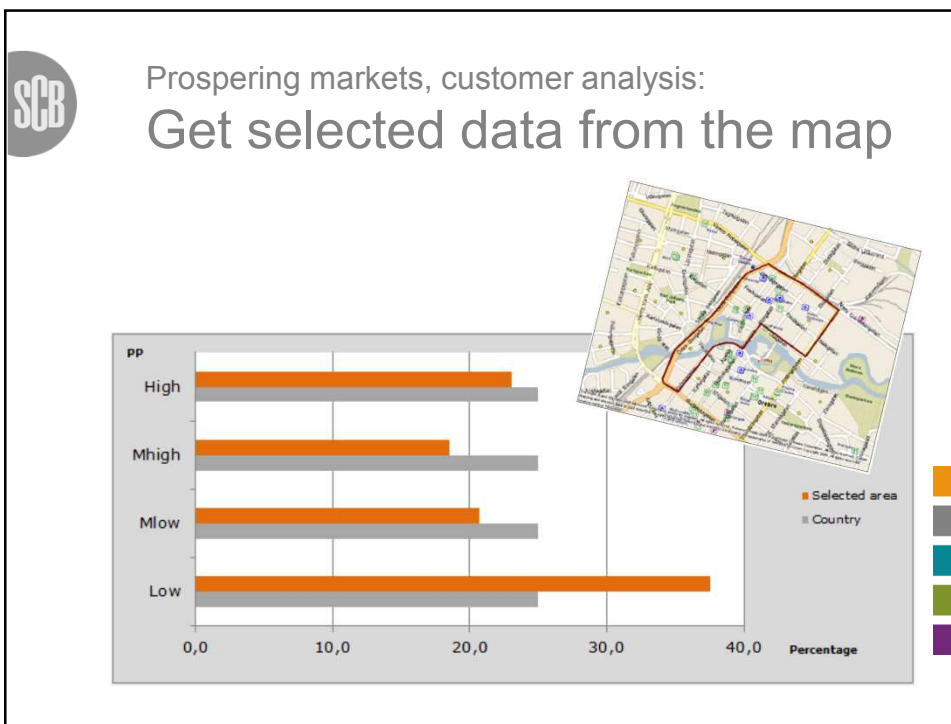




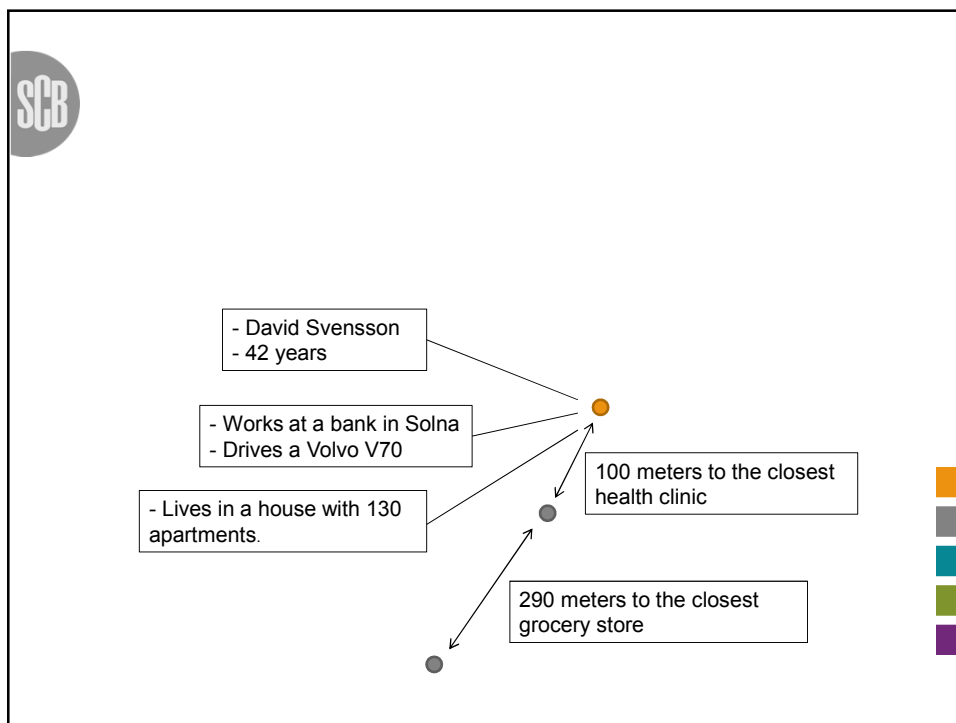
## Flexible Statistics

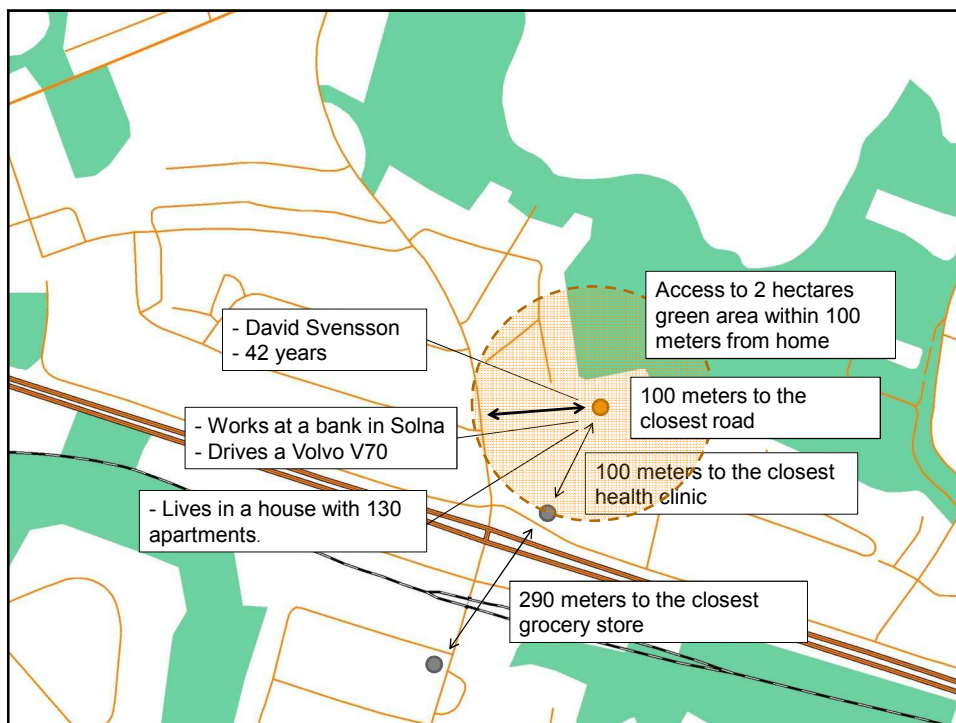
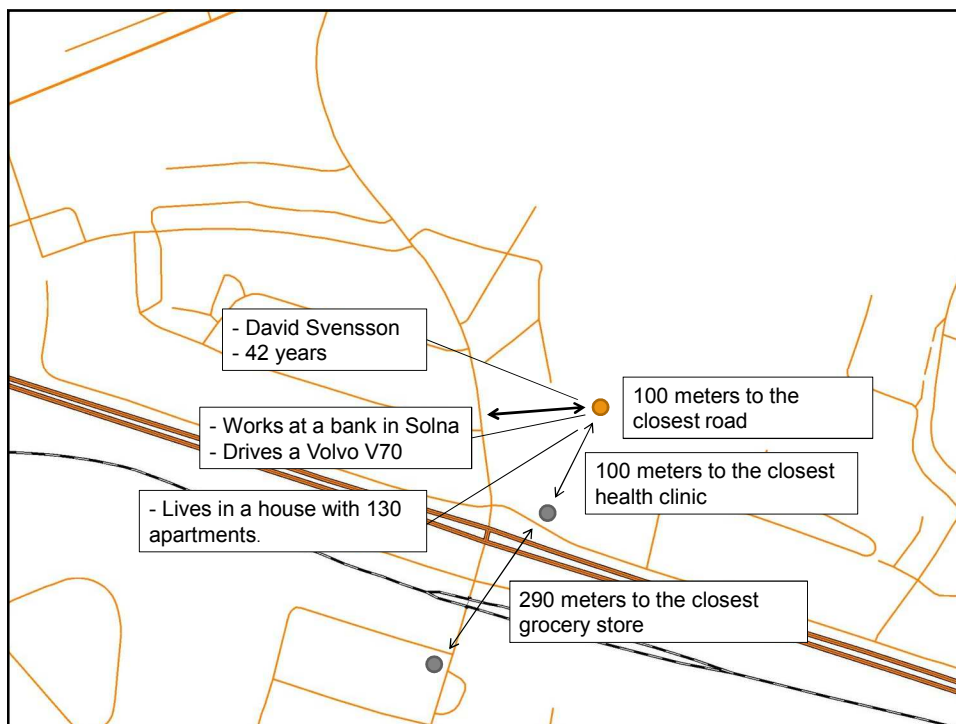
- Policy making, impact assessment
- Planning, find best location
- Preparing for extreme events, risk reduction
- Prospering markets, customer analysis

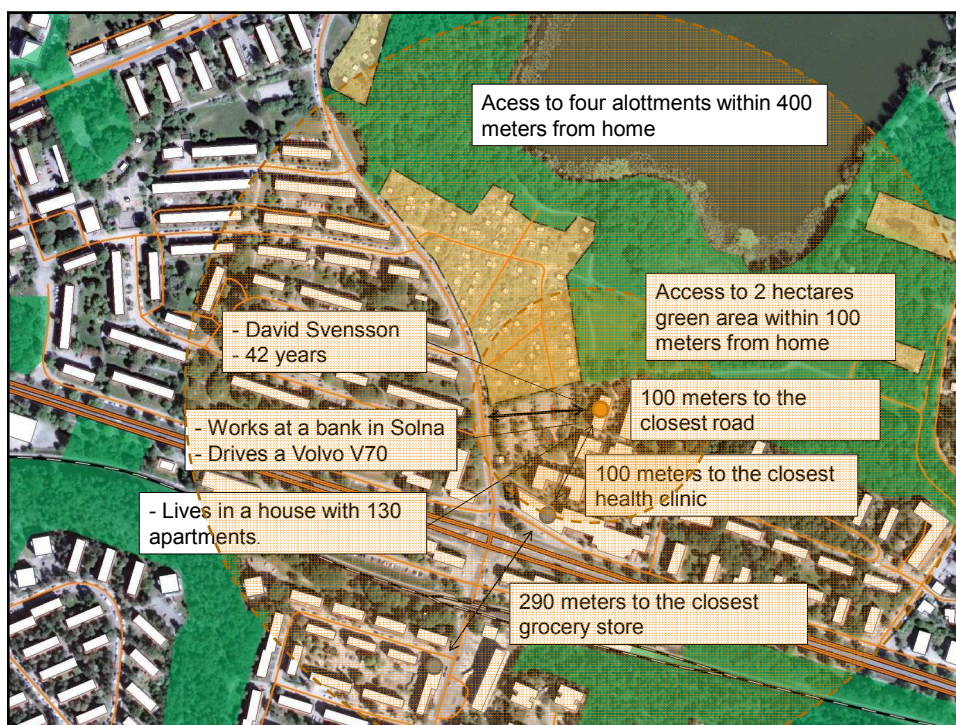
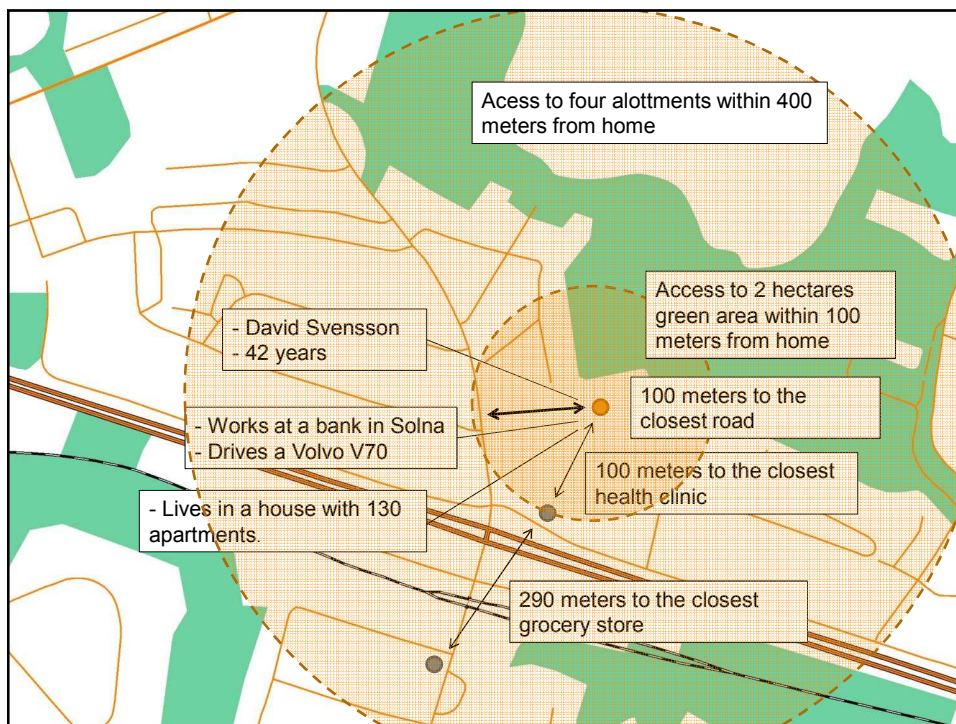




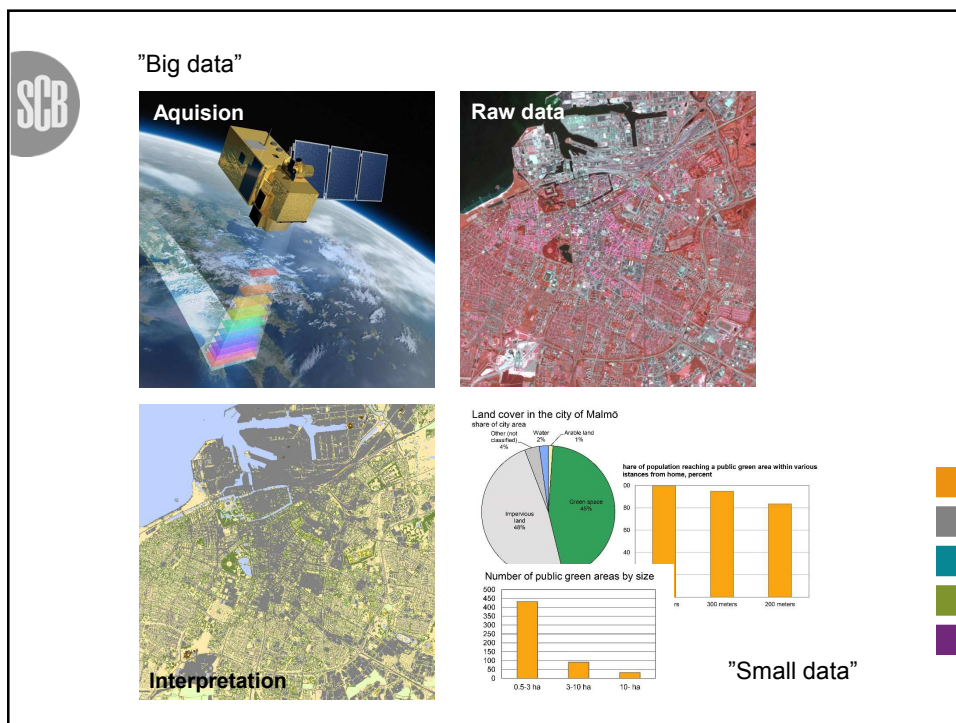
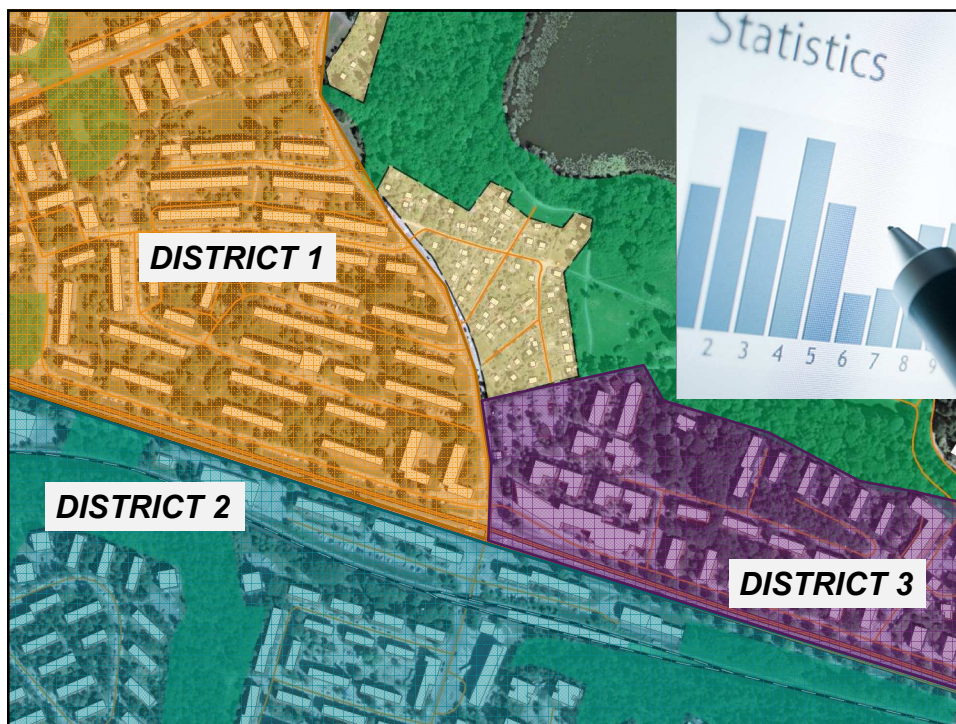












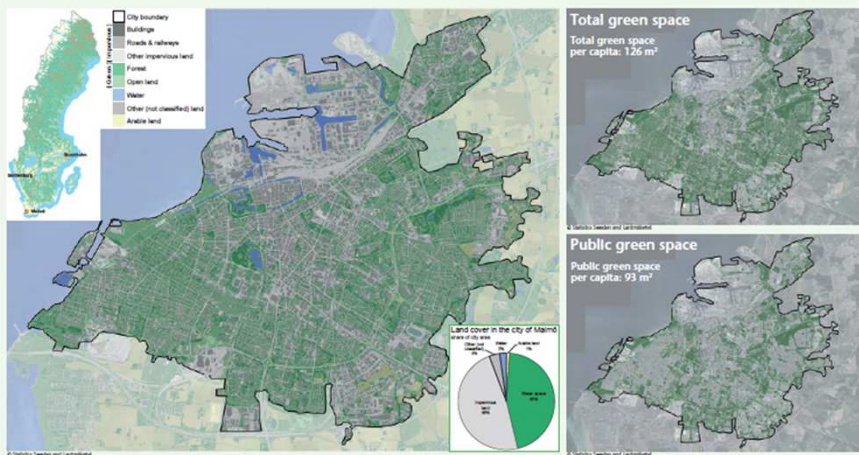




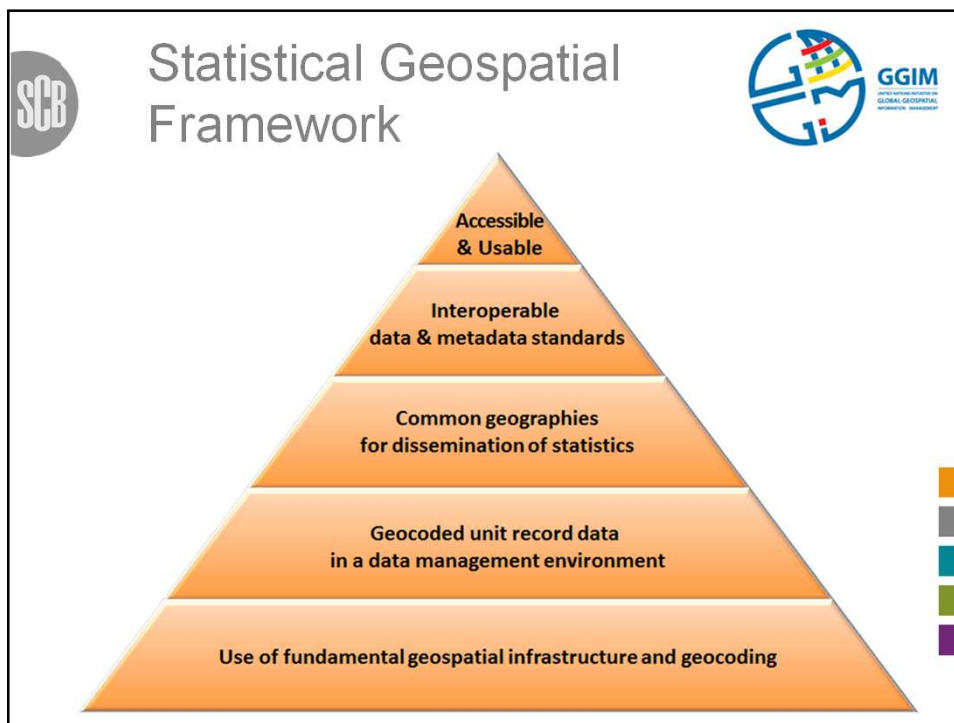
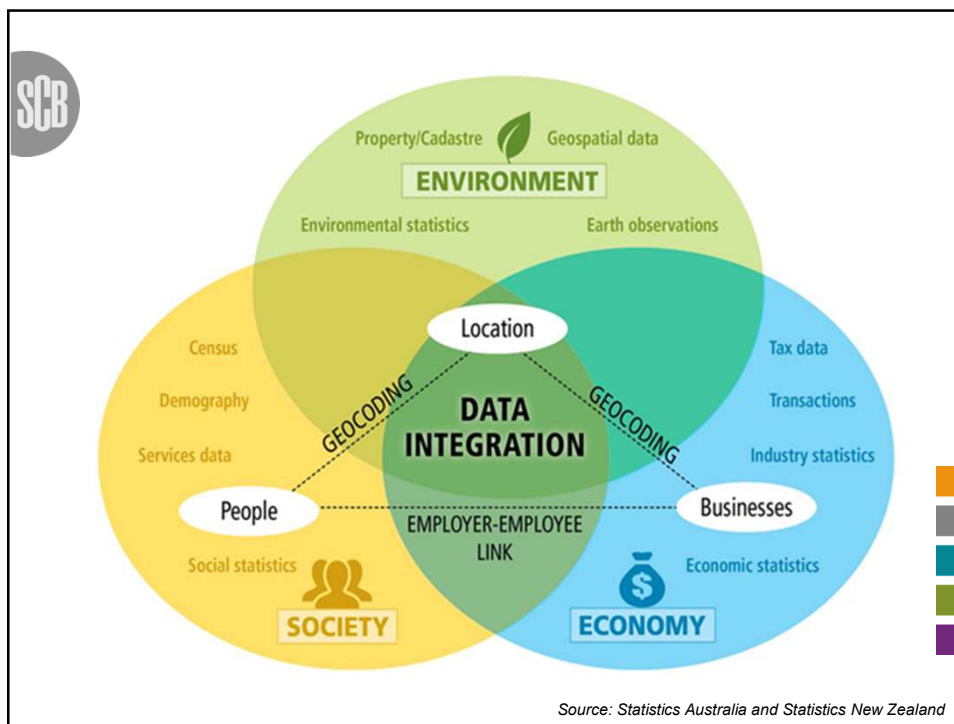
Target 11.7: By 2030, provide universal access to safe, inclusive and accessible, green and public spaces, in particular for women and children, older persons and persons with disabilities

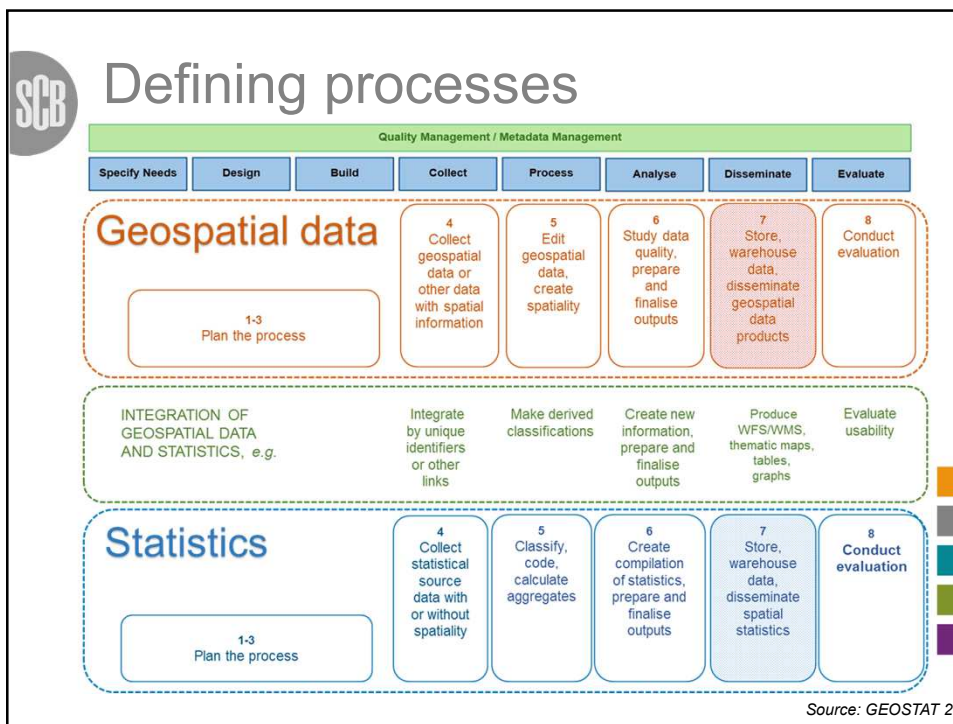


City of Malmö



Source: UNECE









SCB

## European level

- INSPIRE – Infrastructure for Spatial Information in Europe (search, view and download services)
- GEOSTAT Projects
- UN-GGIM: Europe

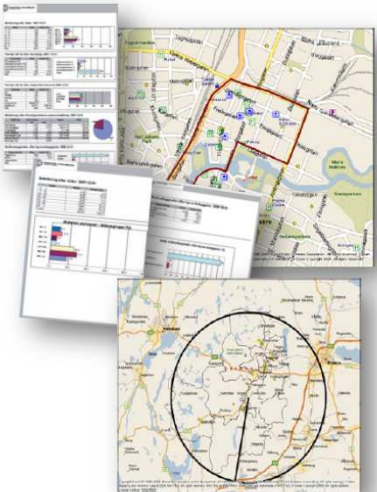
INSPIRE - Infrastructure for Spatial Information in Europe

**SCB** National level



- Innovation and growth
- Digitisation of public administration
- A more effective social planning process
- Climate adaptation and environmental threats
- Defence and civil contingencies

**SCB** Statistics of Tomorrow



- Integrating new data sources in statistical production
- Providing accurate, timely data with high spatial resolution
- Getting data-driven city development = sustainable cities!

